

ACİL DURUM İŞARETLERİ EMERGENCY SIGNS

BULUNDUĞUNUZ YER YOU ARE HERE	ALARM BUTONU ALARM BUTTON
ACİL ÇIKIŞ EMERGENCY EXIT	YANGIN TÜRÜ FIRE EXTINGUISHER
İLK YARDIM KİTİ FIRST AID KIT	YANGIN DOLABI FIRE CABINET
TOPLANMA ALANI ASSEMBLY AREA	TAHLİYE SANDALYESİ EMERGENCY EVAC. CHAIR
GAZ VANASI GAS VALVE	YANGIN BATTANİYESİ FIRE DEPT. CONNECTION
ELEKTRİK PANOSU ELECTRIC PANEL	İTFAİYE BAĞLANTI NOKTASI FIRE DEPT. CONNECTION
HİDRANT FIRE HYDRANT	İTFAİYE SU ALMA VANASI FIRE INTAKE VALVE
ACİL KAÇIŞ YOLU EMERGENCY ESCAPE ROUTE	ALTERNATİF KAÇIŞ YOLU ALTERNATIVE ESCAPE ROUTE

YANGIN & ACİL DURUM TALİMATI FIRE & EMERGENCY INSTRUCTIONS

Bir yangın olayıyla veya farklı bir acil durumda karşılaşırsanız paniğe kapılmayın, yangın ihbar butonuna basın, çevrenizdekileri bağıarak uyarın!
In case of a fire or emergency, please remain calm! Press the fire alarm button, and loudly warn those around you!

Acil durum hattını arayın!
Call the emergency helpline!

Adınızı söyleyin, Ne olduğunu anlatın. Neredesiniz? Yaralı veya mahsur kalan var mı? Operatöre bilgi verin.
Tell the operator your name and explain the incident. Indicate where you are and the number of persons who are injured or stuck, if any.

Asansörleri kullanmayın! Panik yapmadan, hızlı adımlarla acil çıkışları kullanarak binayı tahliye edin.
Do not use the elevators. Walking in quick steps, evacuate the building through the emergency exits. Do not panic!

Bulduğunuz binaya en yakın, işaretlenmiş acil toplanma alanına giderek sayım yapılması ve mahsur kalanların tespiti için hazır bekleyin.
Report to the designated assembly area closest to your building and wait for a headcount to be done to determine those who are stuck.

Yetkililer tarafından güvenli olduğu bilgisi verilene kadar binaya geri dönmeyin!
Do not go back into the buildings until the officials inform you that it is safe to do so!

YANGIN SÖNDÜRME CİHAZI KULLANIMI HOW TO USE A FIRE EXTINGUISHER

ARA CALL 1122

ACİL YARDIM HATTI
EMERGENCY HELPLINE
0212 338 11 22

Pimi çek
ull the pin

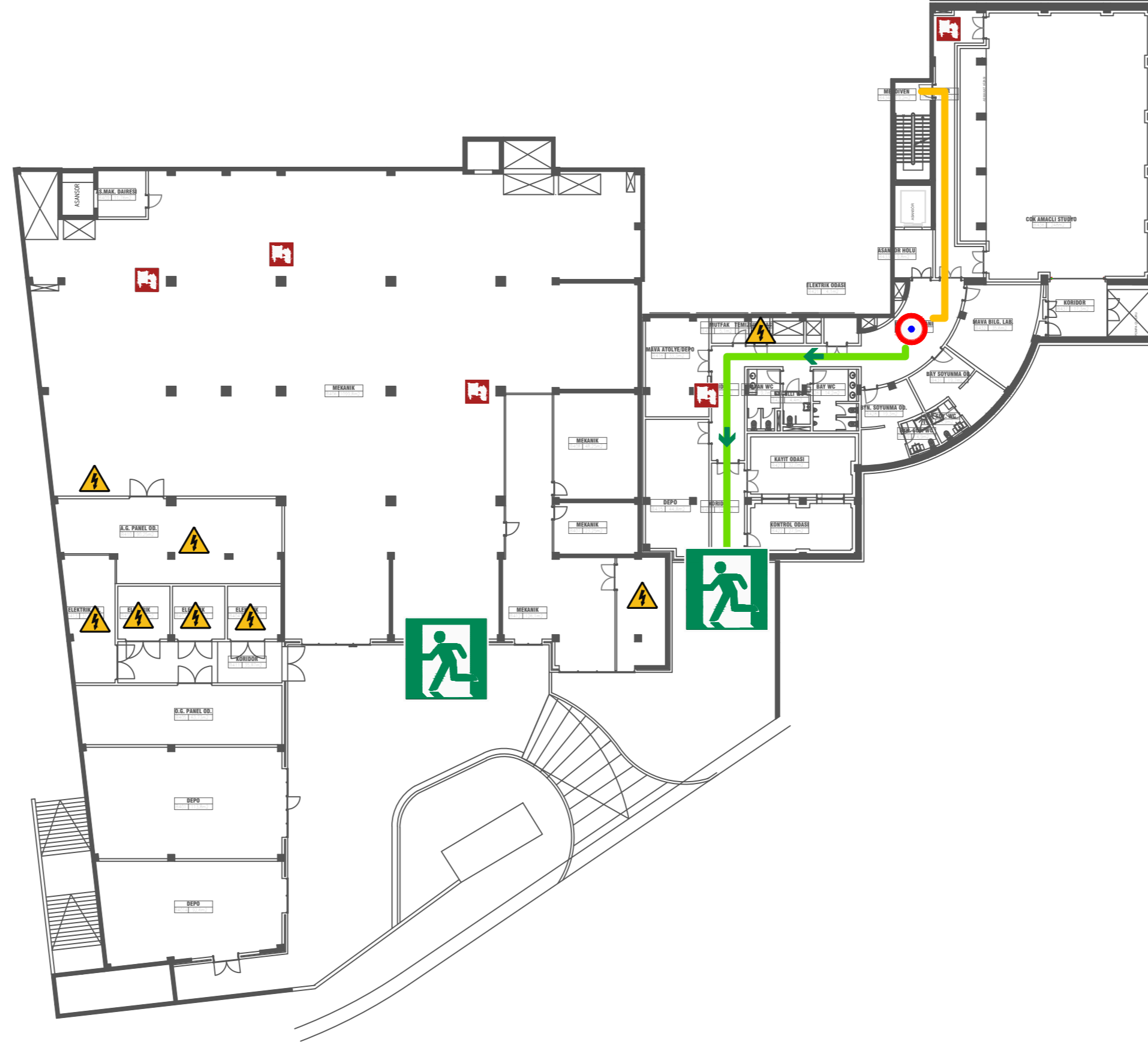
Ateşe yönelt
im

Sık queueze

Süpür
weep

TOPLANMA ALANI ASSEMBLY AREA

Bu bina için acil toplanma alanı, haritada 5 numara ile gösterilen Henry Ford Binası önündeki çim alandır.
The emergency assembly area for this building is the green area in front Henry Ford Guesthouse, as indicated Number 5 on the map.



ACİL DURUM İŞARETLERİ EMERGENCY SIGNS

- | | |
|---|---|
| BULUNDUĞUNUZ YER
YOU ARE HERE | ALARM BUTONU
ALARM BUTTON |
| ACİL ÇIKIŞ
EMERGENCY EXIT | YANGIN TÜPÜ
FIRE EXTINGUISHER |
| İLK YARDIM KİTİ
FIRST AID KIT | YANGIN DOLABI
FIRE CABINET |
| TOPLANMA ALANI
ASSEMBLY AREA | TAHLİYE SANDALYESİ
EMERGENCY EVAC. CHAIR |
| GAZ VANASI
GAS VALVE | YANGIN BATTANİYESİ
FIRE BLANKET |
| ELEKTRİK PANOSU
ELECTRIC PANEL | İTFAİYE BAĞLANTI NOKTASI
FIRE DEPT. CONNECTION |
| HİDRANT
FIRE HYDRANT | İTFAİYE SU ALMA VANASI
FIRE INTAKE VALVE |
| ACİL KAÇIŞ YOLU
EMERGENCY ESCAPE ROUTE | ALTERNATİF KAÇIŞ YOLU
ALTERNATIVE ESCAPE ROUTE |

YANGIN & ACİL DURUM TALİMATI FIRE & EMERGENCY INSTRUCTIONS

- Bir yangın olayıyla veya farklı bir acil durumla karşılaşırsanız paniğe kapılmayın, yangın ihbar butonuna basın, çevrenizdekileri bağıracak şekilde uyarın!
In case of a fire or emergency, please remain calm! Press the fire alarm button, and loudly warn those around you!
- Acil durum hattını arayın!
Call the emergency helpline!
- Adınızı söyleyin, Ne olduğunuzu anlatın. Neredesiniz? Yaralı veya mahsur kalan var mı? Operatöre bilgi verin.
Tell the operator your name and explain the incident. Indicate where you are and the number of persons who are injured or stuck, if any.
- Asansörleri kullanmayın! Panik yapmadan, hızlı adımlarla acil çıkışları kullanarak binayı tahliye edin.
Do not use the elevators. Walking in quick steps, evacuate the building through the emergency exits. Do not panic!
- Bulduğunuz binaya en yakın, işaretlenmiş acil toplanma alanına giderek sayım yapılması ve mahsur kalanların tespiti için hazır bekleyin.
Report to the designated assembly area closest to your building and wait for a headcount to be done to determine those who are stuck.
- Yetkililer tarafından güvenli olduğu bilgisi verilene kadar binaya geri dönmeyin!
Do not go back into the buildings until the officials inform you that it is safe to do so!

**ARA
CALL**

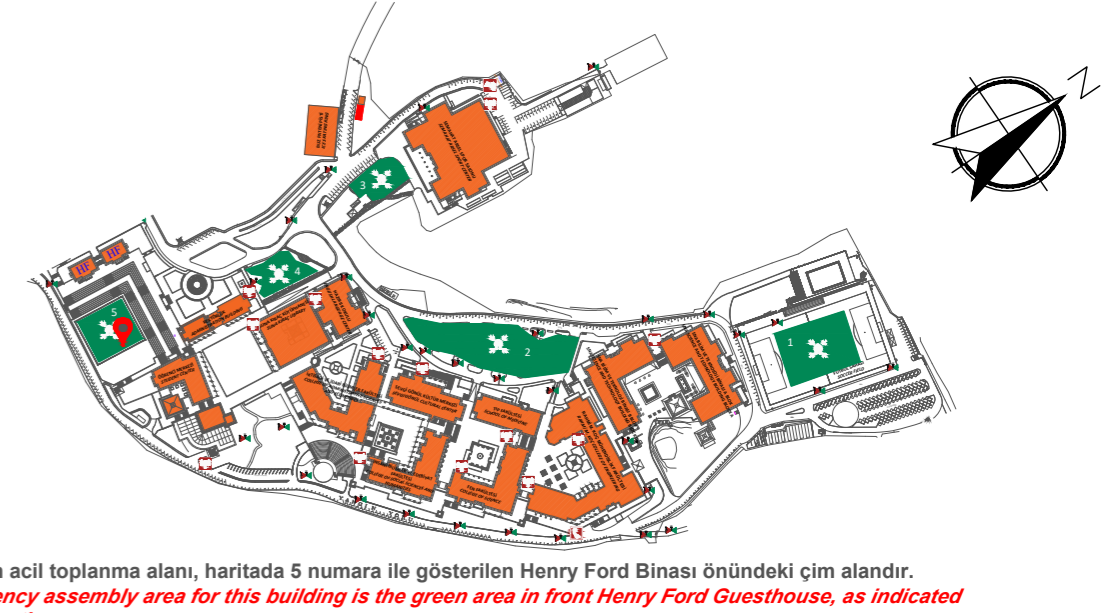
1122

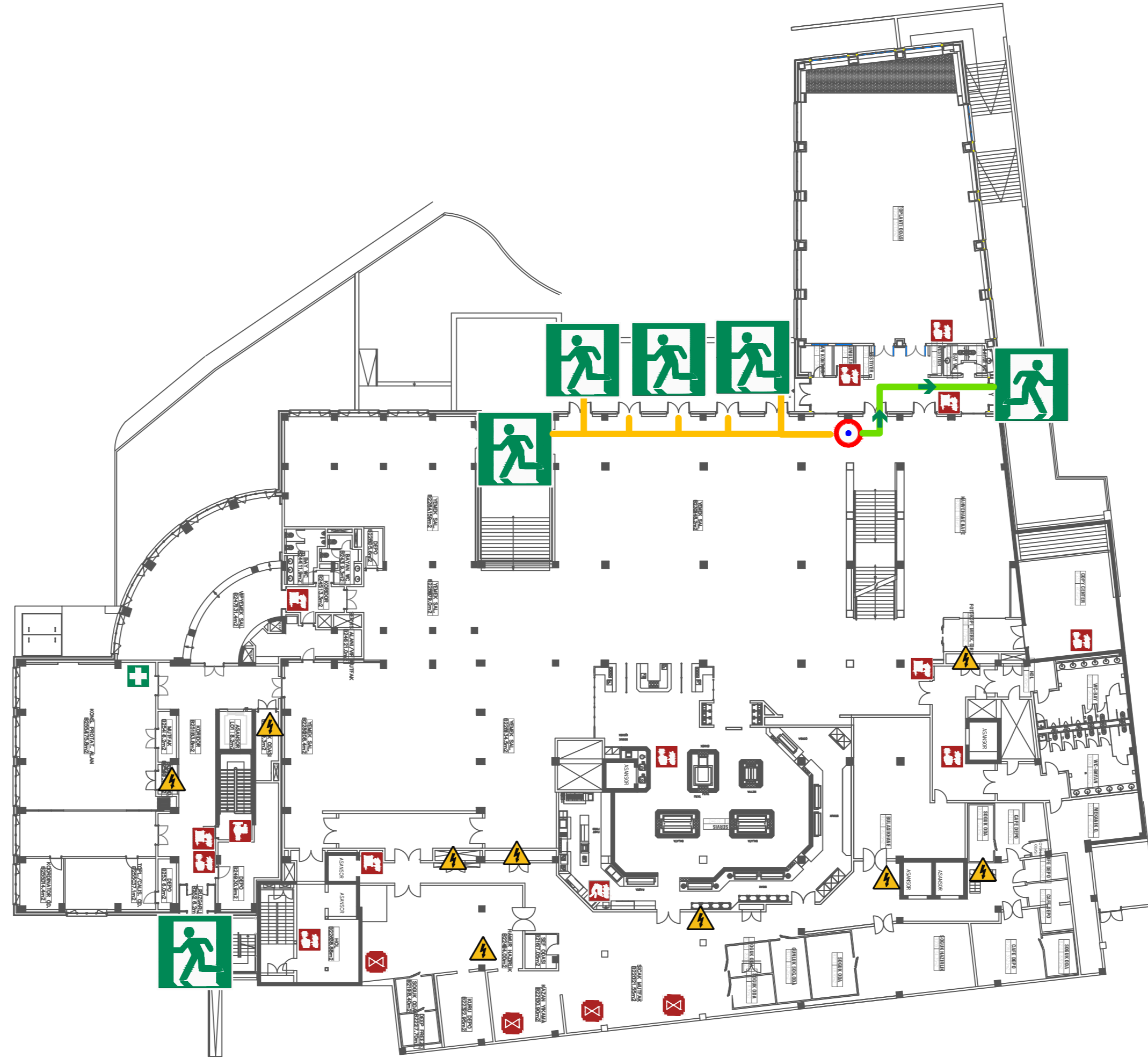
ACİL YARDIM HATTI
EMERGENCY HELPLINE
0212 338 11 22

YANGIN SÖNDÜRME CİHAZI KULLANIMI HOW TO USE A FIRE EXTINGUISHER



TOPLANMA ALANI ASSEMBLY AREA





ACİL DURUM İŞARETLERİ EMERGENCY SIGNS

	BULUNDUĞUNUZ YER YOU ARE HERE		ALARM BUTONU ALARM BUTTON
	ACİL ÇIKIŞ EMERGENCY EXIT		YANGIN TÜPÜ FIRE EXTINGUISHER
	İLK YARDIM KİTİ FIRST AID KIT		YANGIN DOLABI FIRE CABINET
	TOPLANMA ALANI ASSEMBLY AREA		TAHLİYE SANDALYESİ EMERGENCY EVAC. CHAIR
	GAZ VANASI GAS VALVE		YANGIN BATTANİYESİ FIRE BLANKET
	ELEKTRİK PANOSU ELECTRIC PANEL		İTFAİYE BAĞLANTI NOKTASI FIRE DEPT. CONNECTION
	HİDRANT FIRE HYDRANT		İTFAİYE SU ALMA VANASI FIRE INTAKE VALVE
	ACİL KAÇIŞ YOLU EMERGENCY ESCAPE ROUTE		ALTERNATİF KAÇIŞ YOLU ALTERNATIVE ESCAPE ROUTE

YANGIN & ACİL DURUM TALİMATI FIRE & EMERGENCY INSTRUCTIONS

- Bir yangın olayıyla veya farklı bir acil durumla karşılaşırsanız paniğe kapılmayın, yangın ihbar butonuna basın, çevrenizdekileri bağıarak uyarın!
In case of a fire or emergency, please remain calm! Press the fire alarm button, and loudly warn those around you!
- Acil durum hattını arayın!
Call the emergency helpline!
- Adınızı söyleyin, Ne olduğunu anlatın. Neredesiniz? Yaralı veya mahsur kalan var mı? Operatöre bilgi verin.
Tell the operator your name and explain the incident. Indicate where you are and the number of persons who are injured or stuck, if any.
- Asansörleri kullanmayın! Panik yapmadan, hızlı adımlarla acil çıkışları kullanarak binayı tahliye edin.
Do not use the elevators. Walking in quick steps, evacuate the building through the emergency exits. Do not panic!
- Bulduğunuz binaya en yakın, işaretlenmiş acil toplanma alanına giderek sayım yapılması ve mahsur kalanların tespiti için hazır bekleyin.
Report to the designated assembly area closest to your building and wait for a headcount to be done to determine those who are stuck.
- Yetkililer tarafından güvenli olduğu bilgisi verilene kadar binaya geri dönmeyin!
Do not go back into the buildings until the officials inform you that it is safe to do so!

ARA CALL

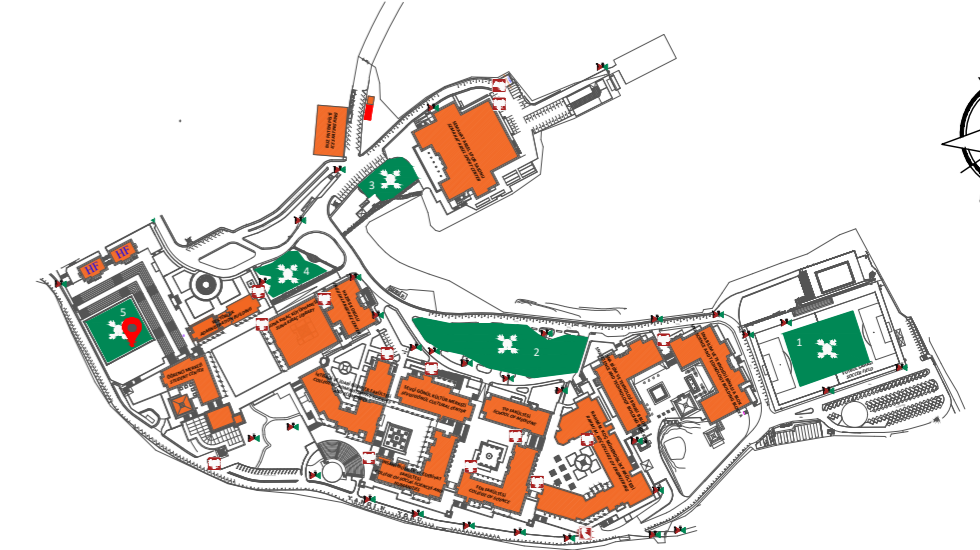
1122

ACİL YARDIM HATTI
EMERGENCY HELPLINE
0212 338 11 22

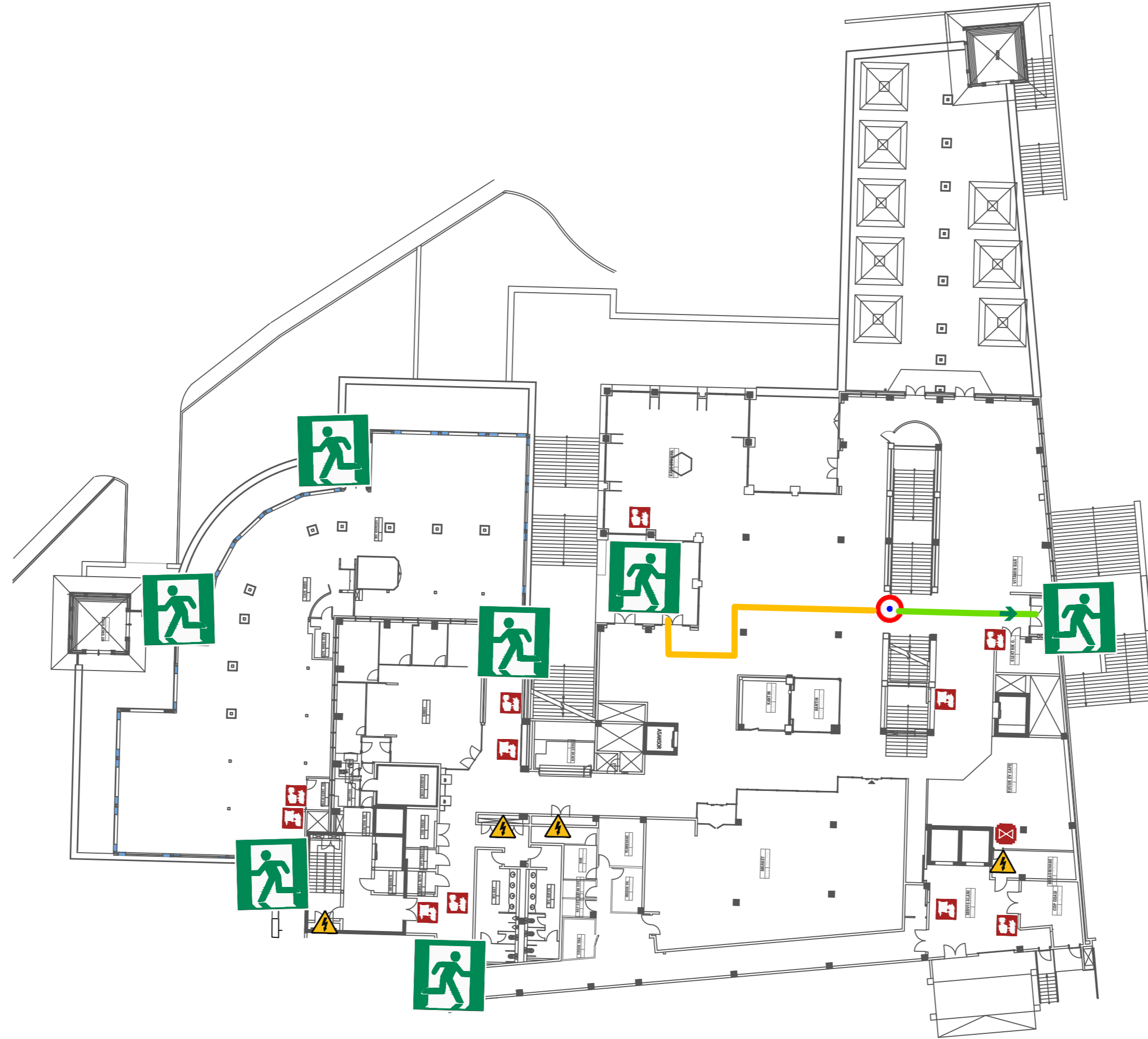
YANGIN SÖNDÜRME CİHAZI KULLANIMI HOW TO USE A FIRE EXTINGUISHER



TOPLANMA ALANI ASSEMBLY AREA



Bu bina için acil toplanma alanı, haritada 5 numara ile gösterilen Henry Ford Binası önündeki çim alandır.
The emergency assembly area for this building is the green area in front Henry Ford Guesthouse, as indicated Number 5 on the map.



ACİL DURUM İŞARETLERİ EMERGENCY SIGNS

BULUNDUĞUNUZ YER YOU ARE HERE	ALARM BUTONU ALARM BUTTON
ACİL ÇIKIŞ EMERGENCY EXIT	YANGIN TÜPÜ FIRE EXTINGUISHER
İLK YARDIM KİTİ FIRST AID KIT	YANGIN DOLABI FIRE CABINET
TOPLANMA ALANI ASSEMBLY AREA	TAHLİYE SANDALYESİ EMERGENCY EVAC. CHAIR
GAZ VANASI GAS VALVE	YANGIN BATTANİYESİ FIRE BLANKET
ELEKTRİK PANOSU ELECTRIC PANEL	İTFAİYE BAĞLANTI NOKTASI FIRE DEPT. CONNECTION
HİDRANT FIRE HYDRANT	İTFAİYE SU ALMA VANASI FIRE INTAKE VALVE
ACİL KAÇIŞ YOLU EMERGENCY ESCAPE ROUTE	ALTERNATİF KAÇIŞ YOLU ALTERNATIVE ESCAPE ROUTE

YANGIN & ACİL DURUM TALİMATI FIRE & EMERGENCY INSTRUCTIONS

- Bir yangın olayıyla veya farklı bir acil durumla karşılaşırsanız paniğe kapılmayın, yangın ihbar butonuna basın, çevrenizdekileri bağıarak uyarın!
In case of a fire or emergency, please remain calm! Press the fire alarm button, and loudly warn those around you!
- Acil durum hattını arayın!
Call the emergency helpline!
- Adınızı söyleyin, Ne olduğunu anlatın. Neredesiniz? Yaralı veya mahsur kalan var mı? Operatöre bilgi verin.
Tell the operator your name and explain the incident. Indicate where you are and the number of persons who are injured or stuck, if any.
- Asansörleri kullanmayın! Panik yapmadan, hızlı adımlarla acil çıkışları kullanarak binayı tahliye edin.
Do not use the elevators. Walking in quick steps, evacuate the building through the emergency exits. Do not panic!
- Bulduğunuz binaya en yakın, işaretlenmiş acil toplanma alanına giderek sayım yapılması ve mahsur kalanların tespiti için hazır bekleyin.
Report to the designated assembly area closest to your building and wait for a headcount to be done to determine those who are stuck.
- Yetkililer tarafından güvenli olduğu bilgisi verilene kadar binaya geri dönmeyin!
Do not go back into the buildings until the officials inform you that it is safe to do so!

**ARA
CALL**

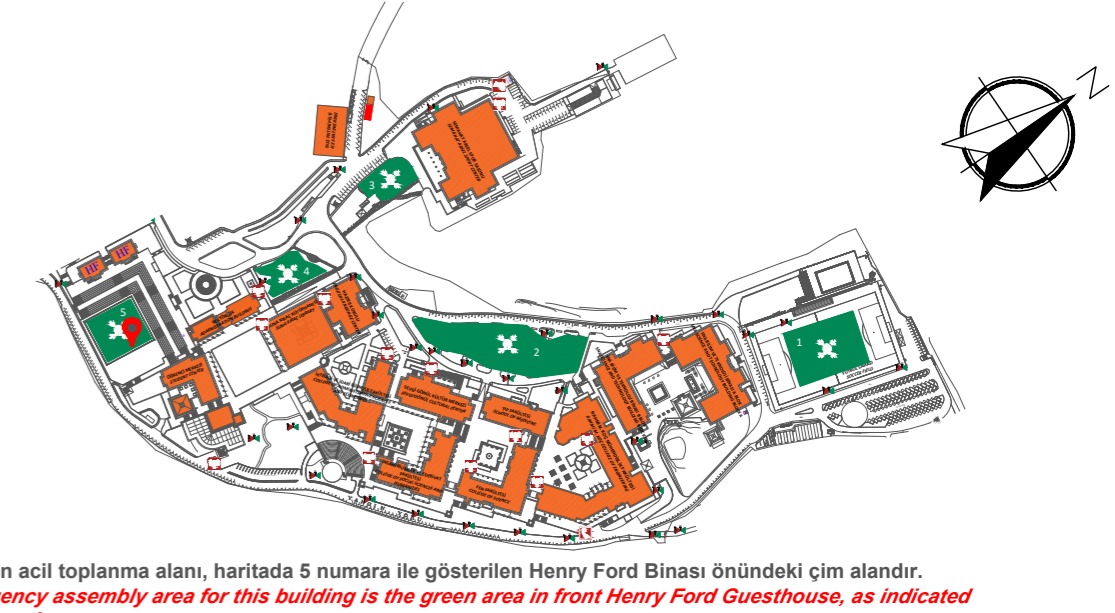
1122

ACİL YARDIM HATTI
EMERGENCY HELPLINE
0212 338 11 22

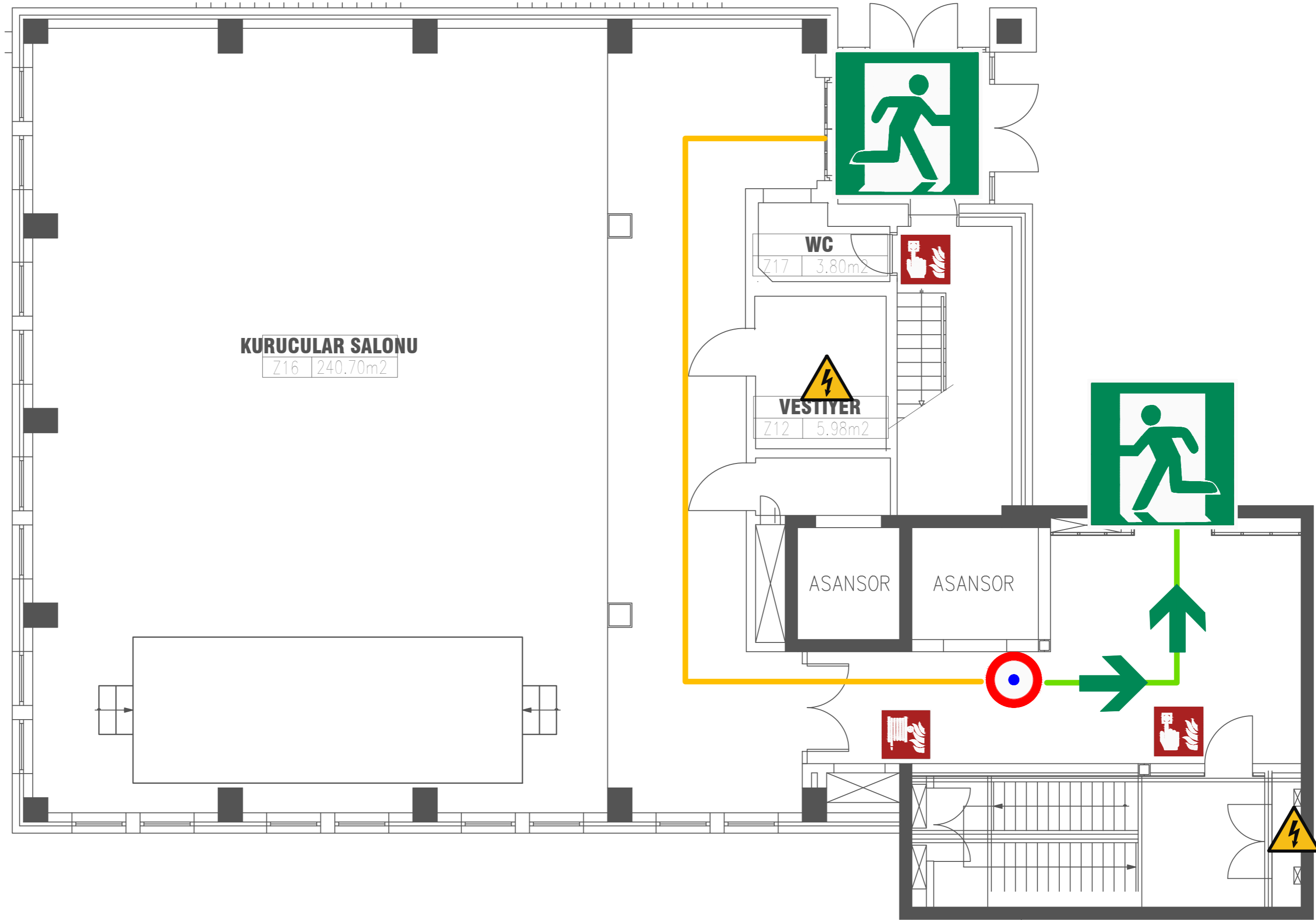
YANGIN SÖNDÜRME CİHAZI KULLANIMI HOW TO USE A FIRE EXTINGUISHER
















TOPLANMA ALANI ASSEMBLY AREA



Bu bina için acil toplanma alanı, haritada 5 numara ile gösterilen Henry Ford Binası önündeki çim alandır.
The emergency assembly area for this building is the green area in front Henry Ford Guesthouse, as indicated Number 5 on the map.









ACİL DURUM İŞARETLERİ EMERGENCY SIGNS

 BULUNDUĞUNUZ YER YOU ARE HERE	 ALARM BUTONU ALARM BUTTON
 ACİL ÇIKIŞ EMERGENCY EXIT	 YANGIN TÜPÜ FIRE EXTINGUISHER
 İLK YARDIM KİTİ FIRST AID KIT	 YANGIN DOLABI FIRE CABINET
 TOPLANMA ALANI ASSEMBLY AREA	 TAHLİYE SANDALYESİ EMERGENCY EVAC. CHAIR
 GAZ VANASI GAS VALVE	 YANGIN BATTANİYESİ FIRE BLANKET
 ELEKTRİK PANOSU ELECTRIC PANEL	 İTFAİYE BAĞLANTI NOKTASI FIRE DEPT. CONNECTION
 HİDRANT FIRE HYDRANT	 İTFAİYE SU ALMA VANASI FIRE INTAKE VALVE
 ACİL KAÇIŞ YOLU EMERGENCY ESCAPE ROUTE	 ALTERNATİF KAÇIŞ YOLU ALTERNATIVE ESCAPE ROUTE



YANGIN & ACİL DURUM TALİMATI FIRE & EMERGENCY INSTRUCTIONS

-  Bir yangın olayıyla veya farklı bir acil durumla karşılaşırsanız paniğe kapılmayın, yangın ihbar butonuna basın, çevrenizdekileri bağıarak uyarın!
In case of a fire or emergency, please remain calm! Press the fire alarm button, and loudly warn those around you!
-  Acil durum hattını arayın!
Call the emergency helpline!
-  Adınızı söyleyin, Ne olduğunuzu anlatın. Neredesiniz? Yaralı veya mahsur kalan var mı? Operatöre bilgi verin.
Tell the operator your name and explain the incident. Indicate where you are and the number of persons who are injured or stuck, if any.
-  Asansörleri kullanmayın! Panik yapmadan, hızlı adımlarla acil çıkışları kullanarak binayı tahliye edin.
Do not use the elevators. Walking in quick steps, evacuate the building through the emergency exits. Do not panic!
-  Bulduğunuz binaya en yakın, işaretlenmiş acil toplanma alanına giderek sayım yapılması ve mahsur kalanların tespiti için hazır bekleyin.
Report to the designated assembly area closest to your building and wait for a headcount to be done to determine those who are stuck.
-  Yetkililer tarafından güvenli olduğu bilgisi verilene kadar binaya geri dönmeyin!
Do not go back into the buildings until the officials inform you that it is safe to do so!

ARA CALL

1122

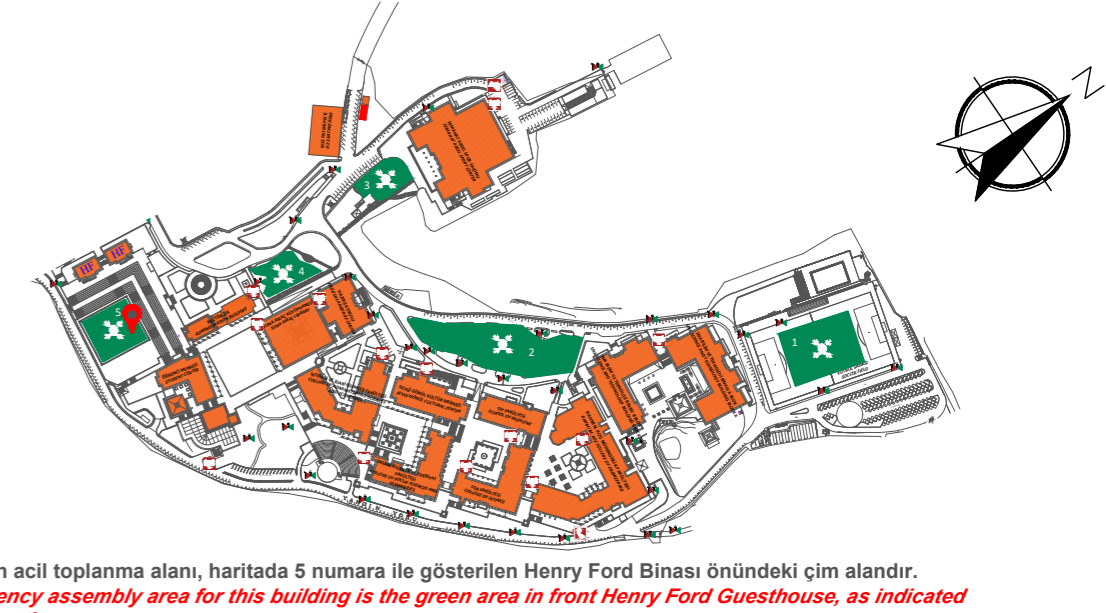
ACİL YARDIM HATTI
EMERGENCY HELPLINE
0212 338 11 22

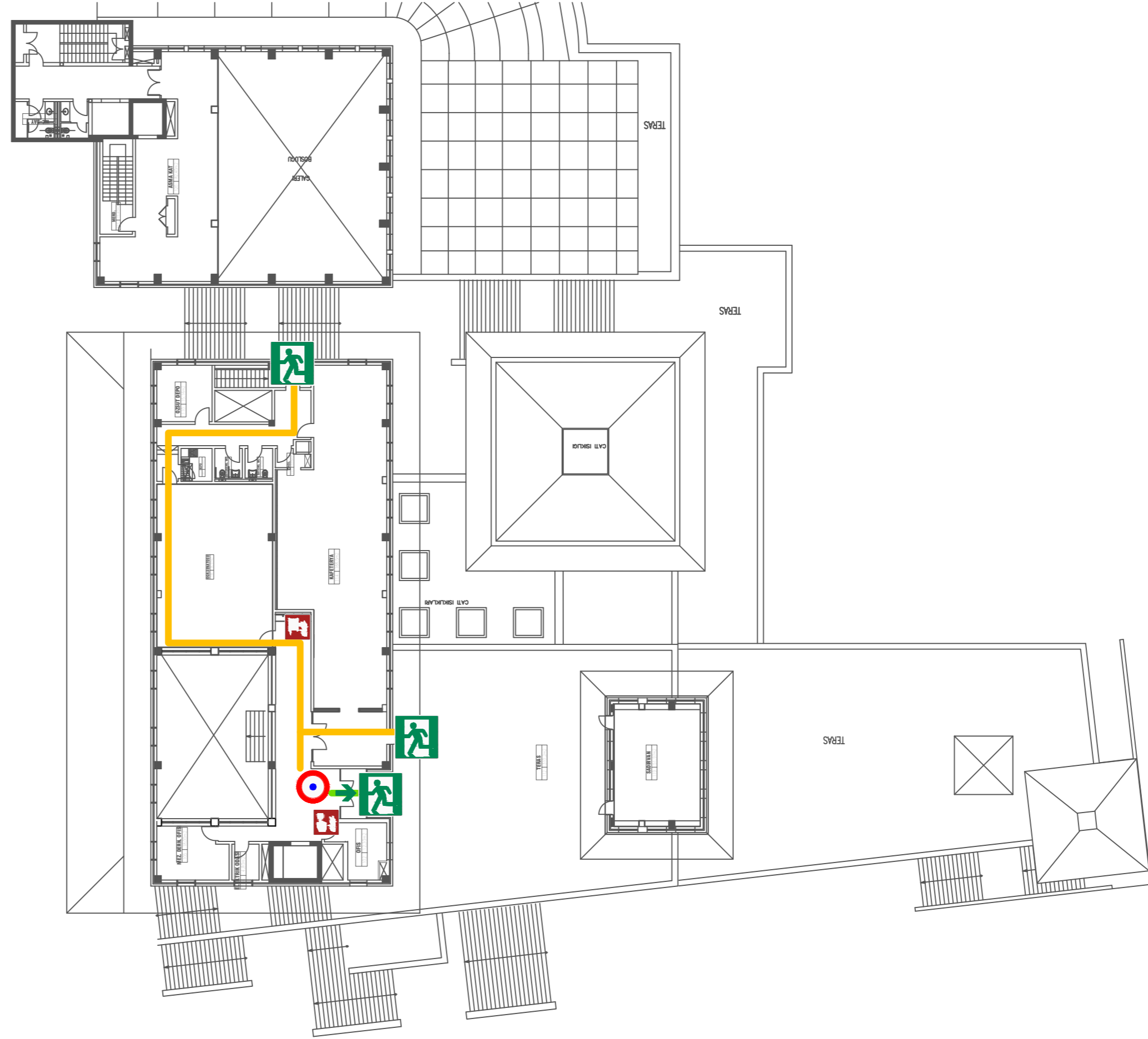


YANGIN SÖNDÜRME CİHAZI KULLANIMI HOW TO USE A FIRE EXTINGUISHER














TOPLANMA ALANI ASSEMBLY AREA











ACİL DURUM İŞARETLERİ EMERGENCY SIGNS

 BULUNDUĞUNUZ YER YOU ARE HERE	 ALARM BUTONU ALARM BUTTON
 ACİL ÇIKIŞ EMERGENCY EXIT	 YANGIN TÜPÜ FIRE EXTINGUISHER
 İLK YARDIM KİTİ FIRST AID KIT	 YANGIN DOLABI FIRE CABINET
 TOPLANMA ALANI ASSEMBLY AREA	 TAHLİYE SANDALYESİ EMERGENCY EVAC. CHAIR
 GAZ VANASI GAS VALVE	 YANGIN BATTANİYESİ FIRE BLANKET
 ELEKTRİK PANOSU ELECTRIC PANEL	 İTFAİYE BAĞLANTI NOKTASI FIRE DEPT. CONNECTION
 HİDRANT FIRE HYDRANT	 İTFAİYE SU ALMA VANASI FIRE INTAKE VALVE
 ACİL KAÇIŞ YOLU EMERGENCY ESCAPE ROUTE	 ALTERNATİF KAÇIŞ YOLU ALTERNATIVE ESCAPE ROUTE

YANGIN & ACİL DURUM TALİMATI FIRE & EMERGENCY INSTRUCTIONS

-  Bir yangın olayıyla veya farklı bir acil durumla karşılaşırsanız paniğe kapılmayın, yangın ihbar butonuna basın, çevrenizdekileri bağıracak şekilde uyarın!
In case of a fire or emergency, please remain calm! Press the fire alarm button, and loudly warn those around you!
-  Acil durum hattını arayın!
Call the emergency helpline!
-  Adınızı söyleyin, Ne olduğunu anlatın. Neredesiniz? Yaralı veya mahsur kalan var mı? Operatöre bilgi verin.
Tell the operator your name and explain the incident. Indicate where you are and the number of persons who are injured or stuck, if any.
-  Asansörleri kullanmayın! Panik yapmadan, hızlı adımlarla acil çıkışları kullanarak binayı tahliye edin.
Do not use the elevators. Walking in quick steps, evacuate the building through the emergency exits. Do not panic!
-  Bulduğunuz binaya en yakın, işaretlenmiş acil toplanma alanına giderek sayım yapılması ve mahsur kalanların tespiti için hazır bekleyin.
Report to the designated assembly area closest to your building and wait for a headcount to be done to determine those who are stuck.
-  Yetkililer tarafından güvenli olduğu bilgisi verilene kadar binaya geri dönmeyin!
Do not go back into the buildings until the officials inform you that it is safe to do so!

ARA CALL

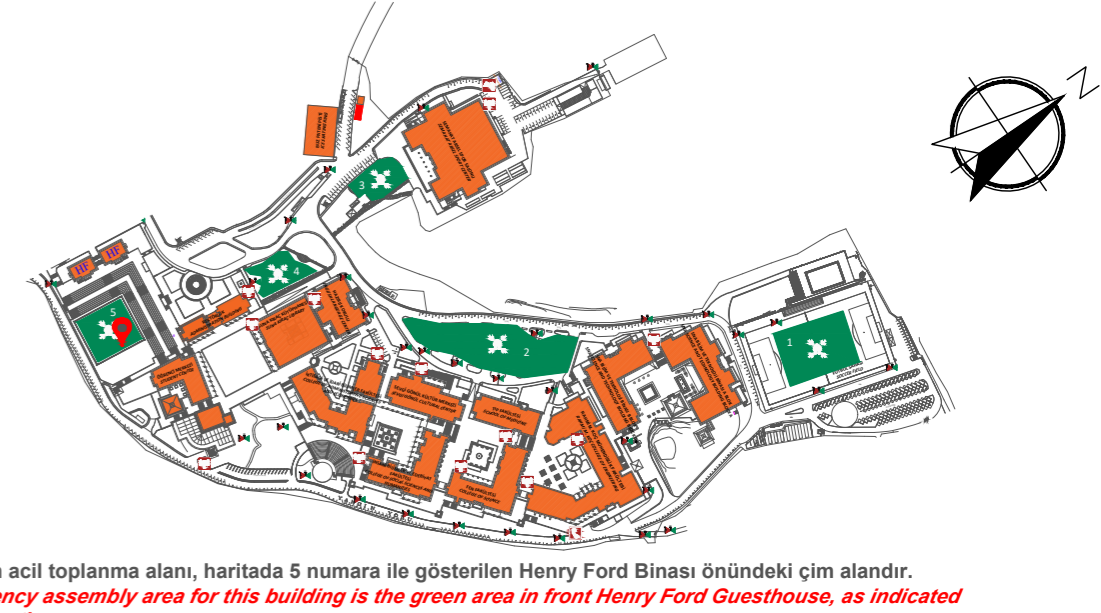
1122

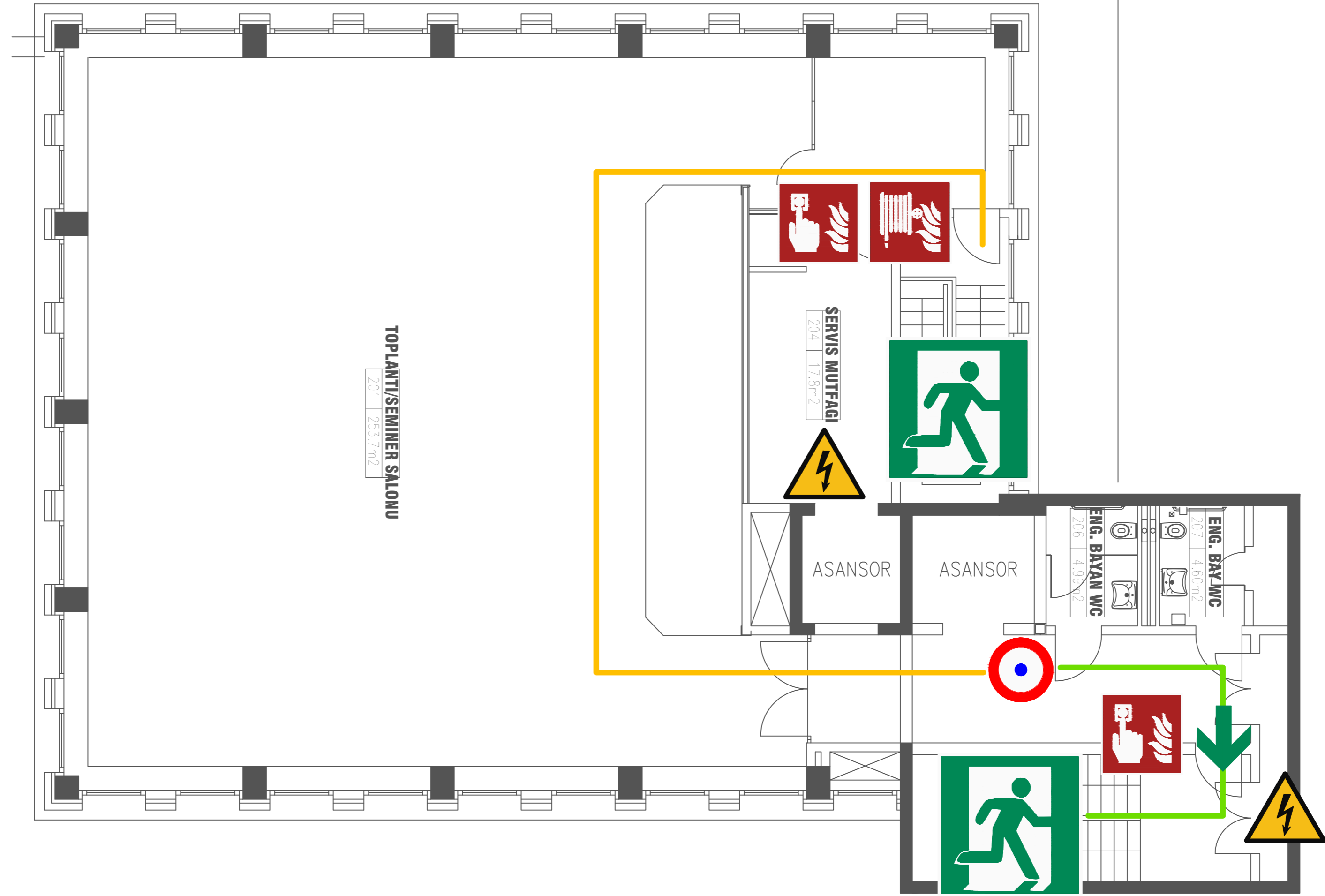
ACİL YARDIM HATTI
EMERGENCY HELPLINE
0212 338 11 22

YANGIN SÖNDÜRME CİHAZI KULLANIMI HOW TO USE A FIRE EXTINGUISHER



TOPLANMA ALANI ASSEMBLY AREA





ACİL DURUM İŞARETLERİ EMERGENCY SIGNS

	BULUNDUĞUNUZ YER YOU ARE HERE		ALARM BUTONU ALARM BUTTON
	ACİL ÇIKIŞ EMERGENCY EXIT		YANGIN TÜPÜ FIRE EXTINGUISHER
	İLK YARDIM KİTİ FIRST AID KIT		YANGIN DOLABI FIRE CABINET
	TOPLANMA ALANI ASSEMBLY AREA		TAHLİYE SANDALYESİ EMERGENCY EVAC. CHAIR
	GAZ VANASI GAS VALVE		YANGIN BATTANİYESİ FIRE BLANKET
	ELEKTRİK PANOSU ELECTRIC PANEL		İTFAİYE BAĞLANTI NOKTASI FIRE DEPT. CONNECTION
	HİDRANT FIRE HYDRANT		İTFAİYE SU ALMA VANASI FIRE INTAKE VALVE
	ACİL KAÇIŞ YOLU EMERGENCY ESCAPE ROUTE		ALTERNATİF KAÇIŞ YOLU ALTERNATIVE ESCAPE ROUTE

YANGIN & ACİL DURUM TALİMATI FIRE & EMERGENCY INSTRUCTIONS

- Bir yangın olayıyla veya farklı bir acil durumla karşılaşırsanız paniğe kapılmayın, yangın ihbar butonuna basın, çevrenizdekileri bağıarak uyarın!
In case of a fire or emergency, please remain calm! Press the fire alarm button, and loudly warn those around you!
- Acil durum hattını arayın!
Call the emergency helpline!
- Adınızı söyleyin, Ne olduğunuzu anlatın. Neredesiniz? Yaralı veya mahsur kalan var mı? Operatöre bilgi verin.
Tell the operator your name and explain the incident. Indicate where you are and the number of persons who are injured or stuck, if any.
- Asansörleri kullanmayın! Panik yapmadan, hızlı adımlarla acil çıkışları kullanarak binayı tahliye edin.
Do not use the elevators. Walking in quick steps, evacuate the building through the emergency exits. Do not panic!
- Bulduğunuz binaya en yakın, işaretlenmiş acil toplanma alanına giderek sayım yapılması ve mahsur kalanların tespiti için hazır bekleyin.
Report to the designated assembly area closest to your building and wait for a headcount to be done to determine those who are stuck.
- Yetkililer tarafından güvenli olduğu bilgisi verilene kadar binaya geri dönmeyin!
Do not go back into the buildings until the officials inform you that it is safe to do so!

YANGIN SÖNDÜRME CİHAZI KULLANIMI HOW TO USE A FIRE EXTINGUISHER

ARA CALL

1122

ACİL YARDIM HATTI
EMERGENCY HELPLINE
0212 338 11 22



Pimi çek
ull the pin



Ateşe yönelt
im

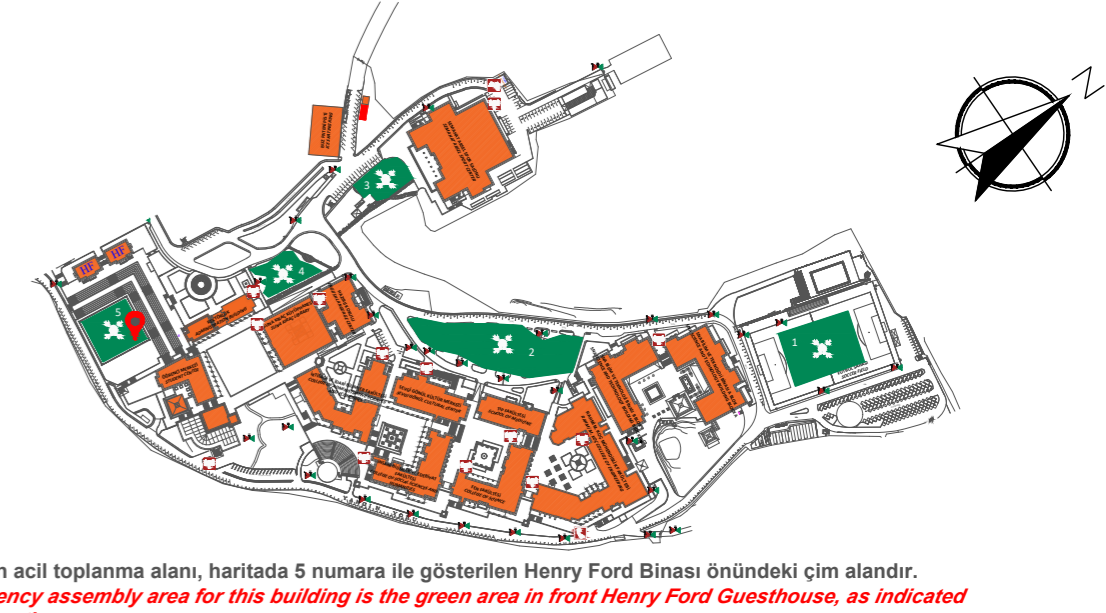


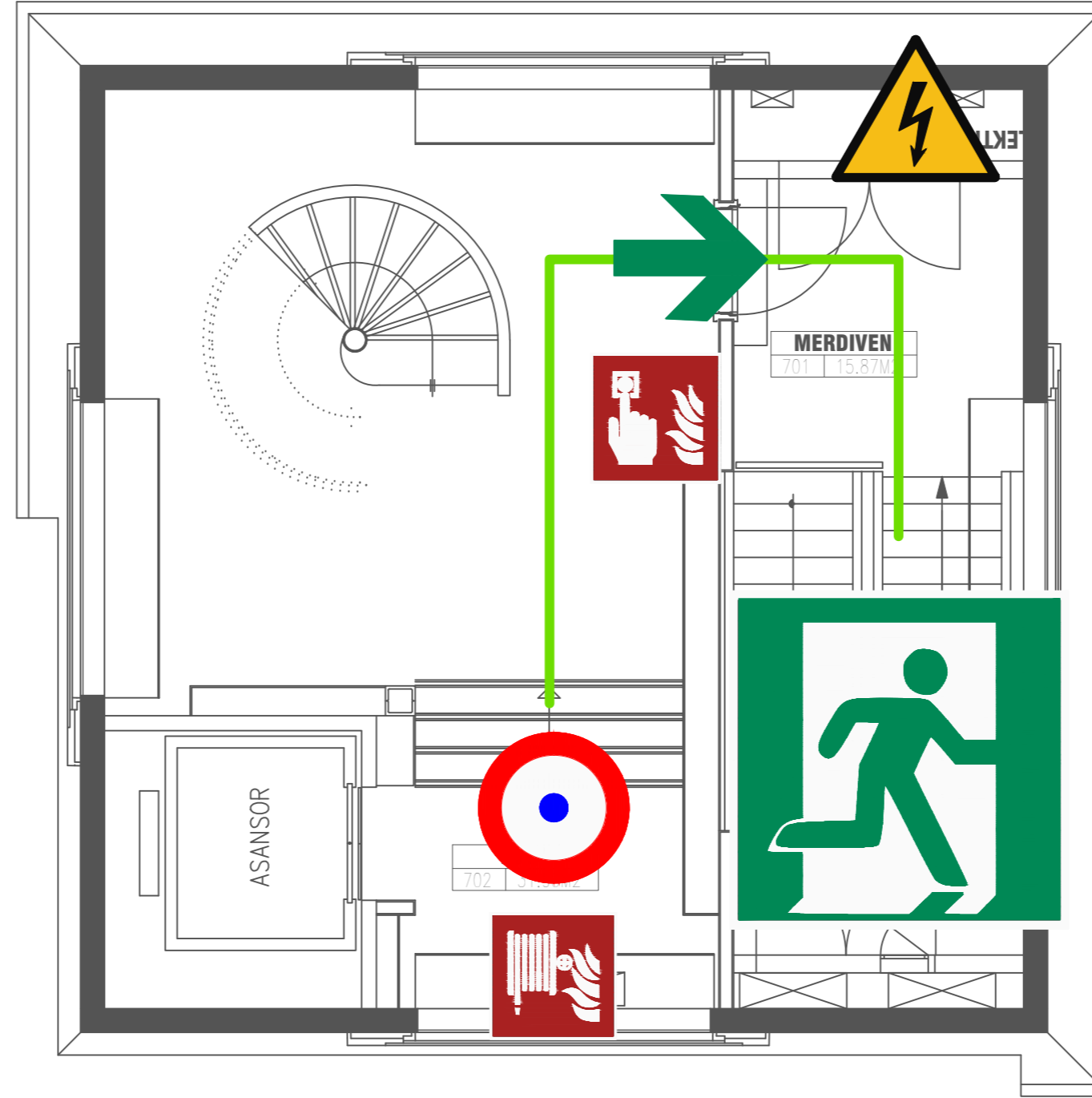
Sık sık
queeze















Süpür
weep

TOPLANMA ALANI ASSEMBLY AREA











ACİL DURUM İŞARETLERİ EMERGENCY SIGNS

 BULUNDUĞUNUZ YER YOU ARE HERE	 ALARM BUTONU ALARM BUTTON
 ACİL ÇIKIŞ EMERGENCY EXIT	 YANGIN TÜPÜ FIRE EXTINGUISHER
 İLK YARDIM KİTİ FIRST AID KIT	 YANGIN DOLABI FIRE CABINET
 TOPLANMA ALANI ASSEMBLY AREA	 TAHLİYE SANDALYESİ EMERGENCY EVAC. CHAIR
 GAZ VANASI GAS VALVE	 YANGIN BATTANİYESİ FIRE BLANKET
 ELEKTRİK PANOSU ELECTRIC PANEL	 İTFAİYE BAĞLANTI NOKTASI FIRE DEPT. CONNECTION
 HİDRANT FIRE HYDRANT	 İTFAİYE SU ALMA VANASI FIRE INTAKE VALVE
 ACİL KAÇIŞ YOLU EMERGENCY ESCAPE ROUTE	 ALTERNATİF KAÇIŞ YOLU ALTERNATIVE ESCAPE ROUTE

YANGIN & ACİL DURUM TALİMATI FIRE & EMERGENCY INSTRUCTIONS

-  Bir yangın olayıyla veya farklı bir acil durumla karşılaşırsanız paniğe kapılmayın, yangın ihbar butonuna basın, çevrenizdekileri bağıarak uyarın!
In case of a fire or emergency, please remain calm! Press the fire alarm button, and loudly warn those around you!
-  Acil durum hattını arayın!
Call the emergency helpline!
-  Adınızı söyleyin, Ne olduğunu anlatın. Neredesiniz? Yaralı veya mahsur kalan var mı? Operatöre bilgi verin.
Tell the operator your name and explain the incident. Indicate where you are and the number of persons who are injured or stuck, if any.
-  Asansörleri kullanmayın! Panik yapmadan, hızlı adımlarla acil çıkışları kullanarak binayı tahliye edin.
Do not use the elevators. Walking in quick steps, evacuate the building through the emergency exits. Do not panic!
-  Bulduğunuz binaya en yakın, işaretlenmiş acil toplanma alanına giderek sayım yapılması ve mahsur kalanların tespiti için hazır bekleyin.
Report to the designated assembly area closest to your building and wait for a headcount to be done to determine those who are stuck.
-  Yetkililer tarafından güvenli olduğu bilgisi verilene kadar binaya geri dönmeyin!
Do not go back into the buildings until the officials inform you that it is safe to do so!

**ARA
CALL**

1122

ACİL YARDIM HATTI
EMERGENCY HELPLINE
0212 338 11 22

YANGIN SÖNDÜRME CİHAZI KULLANIMI HOW TO USE A FIRE EXTINGUISHER



TOPLANMA ALANI ASSEMBLY AREA

